

February  
2021

# Murrieta



## Professional Growth Day

Dear Parents,

I wanted to take this opportunity to remind you that on Friday, February 12th, we will be **closed** for our Annual Professional Growth Day.

This is a day that Discovery Isle has set aside to enhance the education of our staff. It is our mission to be the premier provider of quality childcare in Southern California. We are dedicated to providing the highest quality of customer service delivered with a sense of warmth, friendliness, individual pride and company spirit. Therefore, we are committed to providing a work environment that fosters personal and professional growth. We strive to increase opportunities for career advancement in the industry and our organization in particular. For these reasons we value this day very highly.

We appreciate your support in helping us make this investment in your child's teacher.

Should you have any questions, please stop by the front office.

Thank you for allowing us to be part of your child's early education.

Ashley Kerr, Principal

## February Calendar of Events

February 12th  
Discovery Isle CLOSED  
For PDD

February 15th  
Discovery Isle CLOSED  
in observance of President's Day.

February 23rd  
Learn about the great Inventor:  
Garrett Morgan

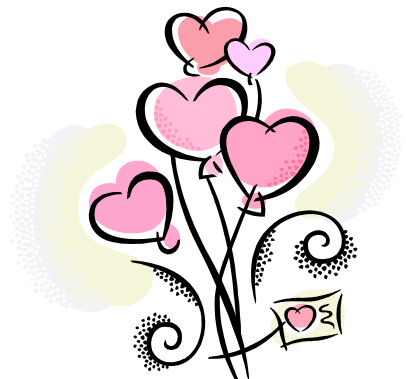
February 26th  
Dress up in your favorite  
Fairy Tale character



## Priority Registration for the 2021/2022 school year!

From February 15th-26th, take advantage of our Priority registration to reserve your spot for the next school year. Register during these dates to receive a discounted registration!

**February 15-19: 50% off \$80.00**  
**February 22-26: 25% off \$115.00**  
Check your email for more info!



## Scholastic Book Fair

Scholastic book orders are accepted each month.  
Order forms can be obtained at the front desk,  
or orders can be placed online.  
See the front office for more information!



## PAR surveys!

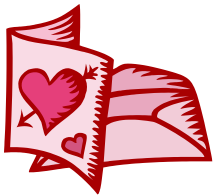
**Thank you for taking the time to complete the Fall PAR surveys. Your feedback is important to us!**

You should have received an email about the next round of PAR survey's that will be emailed out. Help us get to 100% completion.



## Valentine's Day Festivities

In lieu of parties this year, each class has chosen to do either a cookie decorating party or an ice cream party on Thursday, February 11th.



Valentines for friends are welcome...

Please limit everything to pre-packaged/store bought!

**\*We will send home and leave to the parents discretion.**

## Pre-K Parents,

For those of you whose children are going to be going to Kindergarten in the Fall of 2021, it is time to start thinking about what school you want your child to go. If you are going to have your child in the public school system, registration for Kindergarten may have already started!!!

If you would like your child to attend a private Kindergarten, you need to start looking at registration now, as well. While this particular

Discovery Isle does not offer a private Kindergarten, the Discovery Isle in Temecula may be offering it if they have enough interested.

If this is something you are interested in or possibly considering, please let the front office know.

Don't forget, we have our PreK program available for the children who will not be 5 years old by Sept. 1st!



**\*Murrieta School District** has  
Kindergarten applications available NOW.  
Applications are available at the specific school location  
where your child will be attending Kindergarten, and  
completed applications are able to be submitted immediately!

\*Please contact your child's school to verify dates-  
this information was gathered at Cole Canyon Elementary

## Health Topics



### Discovery Isle's Illness Policy

I wanted to take a moment to remind parents of our Illness and Medication Policy. Unfortunately this is the season of colds and allergies, and we want to make sure that we are doing everything we can to help prevent what we can. Your child should not be brought to the Center if, within the last twenty-four (72) hours, the child has had a fever, diarrhea, a yellow or green runny nose, or other illnesses that could be given to children or teachers. Therefore, it is important that you have some kind of alternate care for your child on such occasions. The Center should be notified immediately if your child has contracted one of the common communicable childhood diseases such as: measles, chicken pox, or mumps. We can then inform other parents of the symptoms so they can watch for them in their children.

The Center encourages safeguarding the health of young children by requesting parents to follow these guidelines when deciding if a child is well enough to attend school:

**FEVER:** Keep child home until fever registers below 100° and child is acting well.

**RUNNY NOSE:** Keep child home until thick yellow or green discharge clears up.

**EARACHE:** Keep child home until a doctor examines the ears and recommends the child return to school.

**RASH:** Keep child home until a doctor determines the cause and recommends the child return to school.

**SORE THROAT:** Keep child home until a doctor determines no strep infection exists and the throat is healed.

**COUGH:** Keep child home until coughing subsides.

**UPSET STOMACH OR DIARRHEA:** Keep child home until no further problem exists and the child is eating normally without upset.

Parents are expected to call the Center to indicate the child will be absent and the cause of the absence.

### Medication Policy

When it is necessary for your child to take medicine while at the Center, you will need to follow these guidelines set out by the State. Bring the medicine in its original container, clearly marked with your child's name. Fill out and sign an Administration of Medication Authorization form (available at the front desk) and give the form and the medication to the management staff at the front desk. Be sure to pick up the medication at the end of the day.

For nebulizer/inhaler administration, two additional forms are required (also available at the front desk):

1. Physician's Instructions—to be completed by the child's physician.

2. Consent/Verification Form—to be completed by the parent.

Both forms must be received by the Center before a nebulizer/inhaler treatment can be given.

Remember these important policies concerning administration of medicines at school:

- Clear times and dosages must be stipulated on the authorization form.
- Medicine must be in the original container and clearly marked with child's name. Medicine that has expired may not be given.
- If medicine is not a prescription, we will need a doctor's statement indicating the medication, the necessary times and dosages.

In no case will the center be able to administer over the counter medications in dosages that exceed the recommended dosages listed on the container for the child's weight and age.



## Sweet Hearts

This colorful new twist on a classic treat is a great gift for your child to give to anyone she's sweet on this February 14.

1. To begin, lightly coat a 10- by 15-inch baking sheet with cooking spray and set it aside.
2. Melt the margarine in a large pot over low heat. Add the marshmallows, stirring them continuously until they melt. Remove the pan from the heat. Stir in drops of red food coloring until the color receives a thumbs-up from the chef.
3. Add the Rice Krispies, stirring until they are evenly coated with marshmallow. Spoon the mixture onto the baking sheet.
4. With waxed paper (or lightly buttered hands), smooth out the mixture, spreading it to an even thickness.
5. Cut out hearts with the cookie cutter. Place each heart in a clear plastic bag, tie on a yarn bow, and they're ready for giving. Makes seven 5-inch hearts.

Discovery Isle  
23785 Washington Ave.  
Murrieta, CA 92562  
(951) 304-3033

Visit our Website  
[www.discoveryisle.com](http://www.discoveryisle.com)

## Sweet Start

Add a little heart to breakfast

Steal a food stylist's trick to make a fresh statement with breakfast this Valentine's Day. Simply set a

heart-shaped cookie cutter in a shallow bowl and fill the

cutter with jam, yogurt, or granola. Pour cooked cereal (here we used oatmeal; Cream of Wheat also

works well) outside the cutter, then remove it —

instantly adorable. For a smooth release, lightly oil the

cookie cutter inside and out. Other tasty add-ins and

toppings include maple or berry syrup,

brown sugar, and honey.

